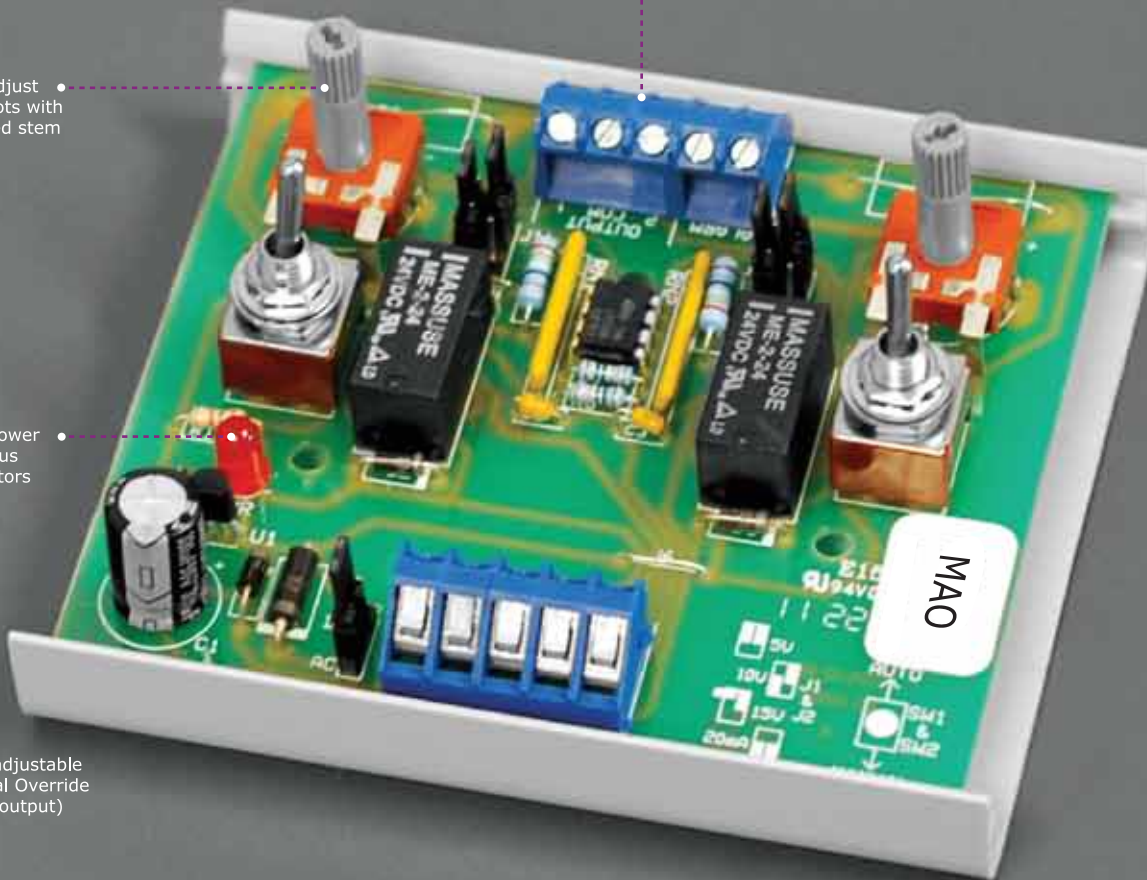


Alarm feedback to indicate override is selected

Top adjust dial pots with knurled stem

LED power & status indicators

Dual adjustable Manual Override (vary output)



Snap Track mounted



L: 3.75" W: 3.25" H: 1.25"

## MAO

The MAO installs between a controller and an actuator to provide adjustable analog manual override when needed. In normal operation, two (2) analog signals route from the controller through the MAO to each actuator. Flip the override switch from automatic to manual on either MAO output and vary the analog signal independently. Each output can have a different span and be analog current or voltage. When a switch is in manual position, an alarm output contact is made or broken (optional) to indicate override is in effect.

The MAO is covered by ACI's Two (2) Year Limited Warranty, which is located in the front of ACI's Sensors & Transmitters catalog or can be found on ACI's web site, which is: [www.workaci.com](http://www.workaci.com).



Made in the U.S.A.

## SPECIFICATIONS

Supply Voltage	24VAC or 24VDC, +/- 10%
Supply Current	100mA maximum
Alarm Output	N.O in auto, N.C. in manual (optional: N.C. in auto, N.O. in manual)
Optional Resistive Alarm Output	3 Watts or 2 Amps maximum (state resistance value when ordering)
Current Rating	2 Amps maximum
Override Analog Input Voltage Range/Impedance	0-24VDC/2A maximum
(Selectable) Range/Impedance	0-5VDC/250Ω minimum 0-10VDC/500Ω minimum 0-15VDC/750Ω minimum 0-20mA/750Ω maximum
Accuracy	+/- 4% of maximum output
Override Analog Output Voltage Range/Impedance	0-24VDC/2A maximum or same as override input
Operating Temperature	32 to 120°F (0 to 48.9°C)
Operating RH	10% to 95% non-condensing
Approvals	RoHS

## ORDERING

**BUILD YOUR PART#**

EXAMPLE

MAO

MAO

STEP 1

DEVICE

Select MAO.

MAO



MAO